

# HAMPTON

Hampton Controls

1-800-437-2664

www.hamptoncontrols.com

## **DURAKOOL** Series CB (Closed) 80 Amps

### **3 POLE**

#### **SPECIFICATIONS**

These Durakool CF (normally open) and CB (normally closed) contactors are general-purpose rated at 80 Amps. Compression-lug connectors, top and bottom, provide easy installation.

"C" size Durakool contactors have mercury-to-tungsten contacts which can handle inductive, tungsten, motor and resistive loads. Tungsten's ability to resist arcing erosion greatly prolongs the life of the contactor.

<b>Maximum Time:</b>	<b>Operate</b>	<b>Release</b>
<b>Normally Open:</b>	90 ms	140 ms
<b>Normally Closed:</b>	200 ms	100 ms
<b>Contact Bounce, Release:</b>	Allowed on normally open models	
<b>Recommended DC Load Polarity:</b>	Top Connector Negative	
<b>Load Connectors:</b>	Pressure Connector *1-8 AWG Cu.	
<b>Coil Terminals:</b>	*6-32 Wire Binding Screw, Max. *12 AWG Cu.	
<b>Breakdown Voltage:</b>	5000 VRMS/Min. Across Contacts	



TYPE/SERIES		CB (Normally Closed)			
DESCRIPTION	Volts	Part Number	Typical Coil Data		
			DC Ohms	Watts	Amps
3 Pole	24	CB3-301	1.4	40.0	4.720
	120	CB3-302	23	33.3	0.850
	208	CB3-303	100	23.0	0.345
	240	CB3-304	110	24.0	0.321
	277	CB3-305	150	26.9	0.294
	480	CB3-306	440	24.2	0.162
	12 (DC)	CB3-308	10	13.4	1.120
	24 (DC)	CB3-307	40	13.4	0.558

ELECTRICAL RATINGS	GENERAL PURPOSE 0.7/0.8 UL Power Factor						DC		Tungsten Lamp/60 Hz	AC MOTOR LOAD				
	Volts						1-48	120	240	120	240	240		
SERIES	60 Hz Amps						DC Amps		Amps	KW	Hp	Hp	Hp	
CF 80 (Normally Open)	80	80	80	80	80	80	80	35	25	80	9.6	5.0	7.5	15.0
CB 80 (Normally Closed)	80	80	80	60	60	40	80	35	25	75	9.0	5.0	7.5	15.0

# HAMPTON

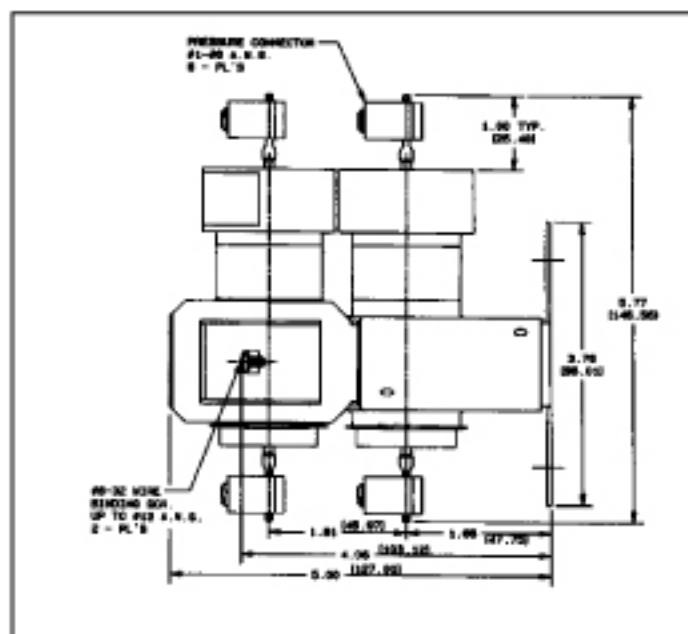
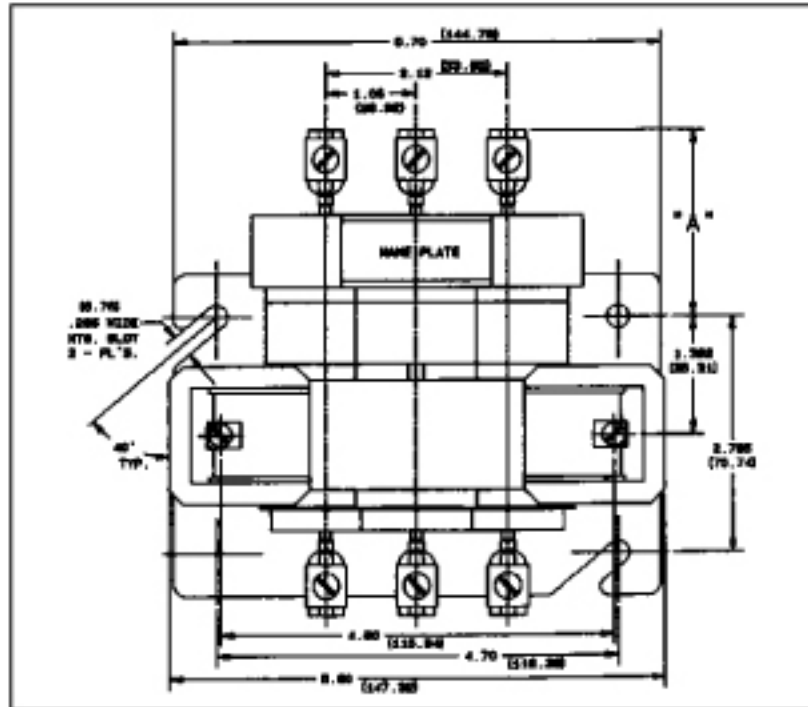
Hampton Controls

1-800-437-2664

www.hamptoncontrols.com

## **DURAKOOL** Series CB (Closed) 80 Amps

### **3 POLE**



# HAMPTON

Hampton Controls

1-800-437-2664

www.hamptoncontrols.com

## **DURAKOOL** Series CB (Closed) 80 Amps

### **3 POLE**

